

SECTION A-A

NOTES:

1. HOUSING; GREY CAST IRON

△ CUSTOMER SPECIFIED BASE ON AIR GAP REQUIREMENTS SOLD SEPARATELY
ON PURCHASE ORDER.

MODEL ANFF-4 ISOLATOR 4 INCH FLOATING FLOOR

MODEL NO.	LOAD	PART NUMBER	COLOR CODE
ANFF-4-1000	1000	770109-1-6	YELLOW
ANFF-4-1500	1500	770109-2-6	GREEN
ANFF-4-2000	2000	770109-3-6	RED
ANFF-4-2500	2500	770109-4-6	WHITE
ANFF-4-3500	3500	770109-6-6	PURPLE

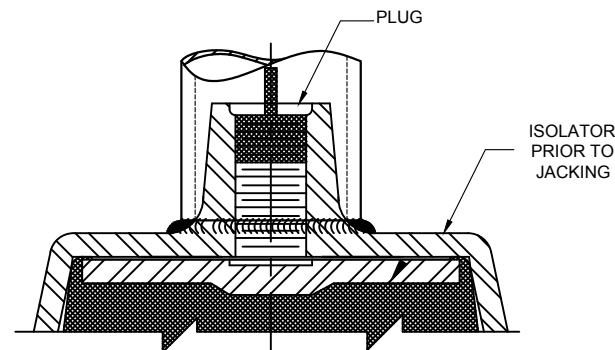


FIGURE 1

PLUG APPLICATION ILLUSTRATION
SHIPPED LOOSE

FOR INDICATED AIR GAP, ORDER THE FOLLOWING
JACK-UP SCREW

PART NUMBER	AIR GAP	LENGTH
145745-1	1-1 1/2	2 1/2 "
145235	1 1/2-2 1/2	3 1/2"
145745-2	2 1/2-3 1/2	4 1/2"
145236	3 1/2-4 1/2	5 1/2"

OTHER MATERIALS, COMPOUNDS, OR FINISHES WITH EQUAL OR SUPERIOR
PROPERTIES MAY BE SUBSTITUTED AS THEY BECOME AVAILABLE.

CERTIFIED FOR:

JOB NAME: _____

CUSTOMER : _____

CUSTOMER P.O.: _____

SALES ORDER: _____

MODEL ANFF-4 1000-3500 LBS
ELASTOMERIC ISOLATOR
6 INCH FLOATING FLOOR
0.3 DEFLECTION



THE VMC GROUP
The Power of Together
Bloomington, NJ 07403
Houston, TX 77041

SCALE:

NONE

SHEET:



DRAWING NO.:

REVISION